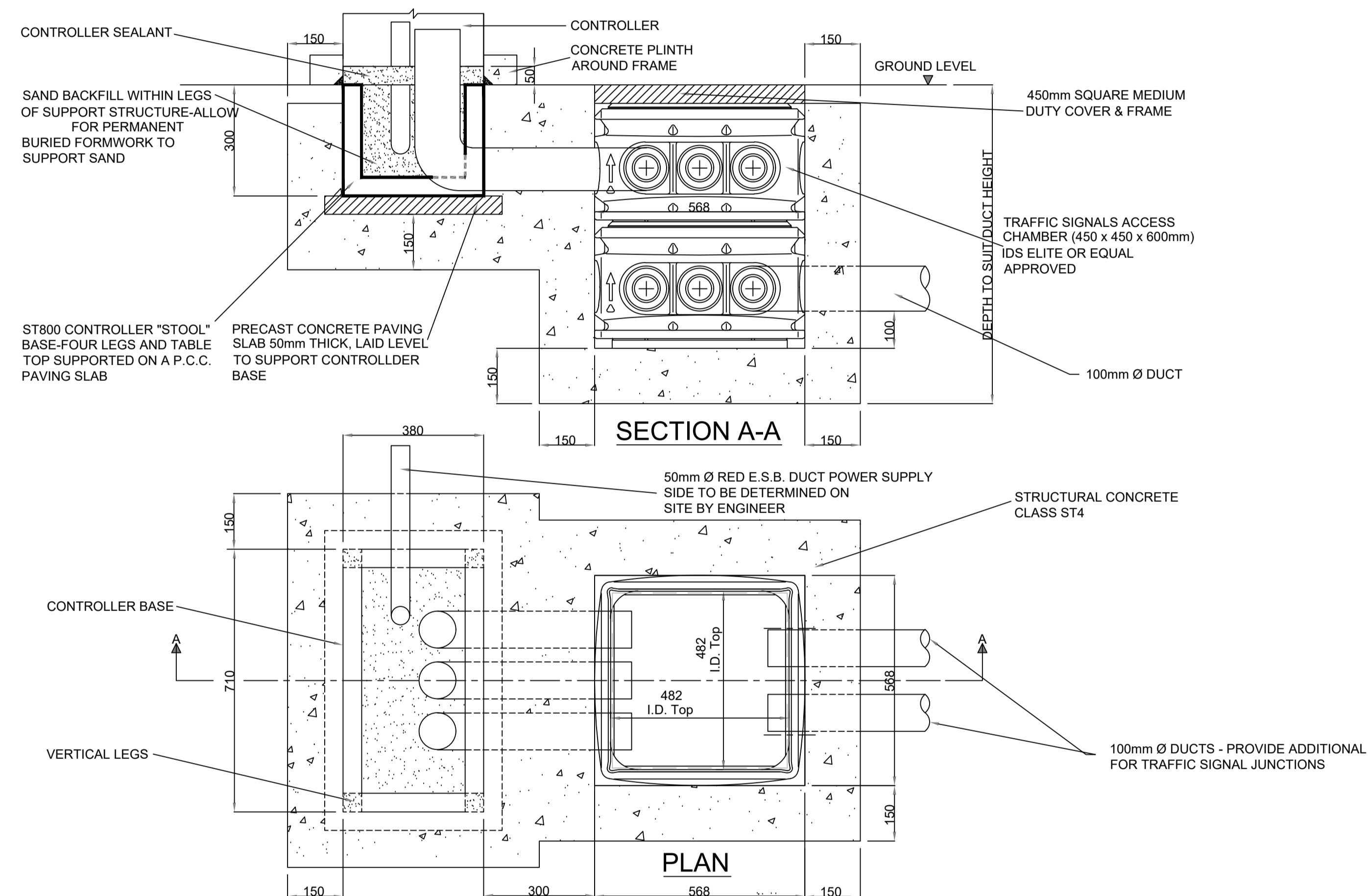


GENERAL NOTES

- DO NOT SCALE THIS DRAWING. WORK ONLY TO FIGURED DIMENSIONS.
- FOR ALL RELEVANT NOTES, REFER TO STRUCTURAL AND CIVIL ENGINEERING PERFORMANCE SPECIFICATION.
- ANY DISCREPANCIES ARE TO BE REPORTED TO PINNACLE CONSULTING ENGINEERS IMMEDIATELY.
- THIS DRAWING IS TO BE READ IN CONJUNCTION WITH ALL OTHER RELEVANT ENGINEERS, ARCHITECTS AND SUB-CONTRACTORS DRAWINGS AND DETAILS.

CONTROLLER NOTES

- CONTROLLER BASES SHALL BE POSITIONED AND INSTALLED IN ACCORDANCE WITH THE RELEVANT SITE DRAWINGS AND AS DETERMINED BY THE ENGINEER.
- SIGNAL CONTROLLER BASES VARY IN SIZE RELATIVE TO THE MANUFACTURER. ANY BASE SHALL BE INSTALLED USING A SIMILAR METHOD. THIS DRAWING IS DIMENSIONED TO SUIT THE ST800 STOOL BASE UNIT.
- THE BASE UNIT SHOULD BE PLUMB. THE CONCRETE SHOULD BE TAMPED AROUND THE BASE, AND THE BASE SECURED AS REQUIRED, UNTIL THE CONCRETE HAS CURED.
- THE VOID WITHIN THE LEGS OF THE BASE SHOULD BE BACKFILLED WITH COMPACTED SAND (TO B.S. 1199 & 1200), TO THE TOP OF THE BASE LEVEL. THE SURROUNDING SURFACE MATERIALS SHOULD BE REINSTATED TO MATCH EXISTING FOOTWAY LEVELS, TEXTURE AND TYPE. THE REINSTATEMENT SHALL BE INCLUDED IN THE COST OF THIS COMPLETE INSTALLATION.
- DRAW CARDS SHALL BE INSTALLED IN ALL DUCTS/CONDUITS.
- CONTROLLER BASE TO BE SUPPLIED BY THE TRAFFIC SIGNAL CONTRACTOR.



REV	DESCRIPTION	BY	CHK	DATE
P02	ISSUED FOR PLANNING	RK	RK	02/09/24

CLIENT
CAPAMI LTD.

PROJECT
OLDCOURT LRD

DRAWING TITLE
CONTROLLER BASE & ACCESS CHAMBER

PINNACLE
CONSULTING ENGINEERS

GROSVENOR COURT,
67A PATRICK STREET,
DUN LAOGHAIRE,
COUNTY DUBLIN
IRELAND. TELEPHONE: +353 1231 1041
WELWYN GARDEN CITY | NORWICH | LONDON | THE HAGUE

DRAWING STATUS			
PLANNING			
SCALE @ A1	DATE	DRAWN BY	CHECKED
1:50	AUG '22	RK	RK
DRG NO.	REVISION		
P211102-PIN-XX-DR-D-153-SI	P02		

COPYRIGHT PINNACLE

REF: P180109